



# Company Profile

**THE  
POWER  
TO MOVE  
MATERIALS<sup>™</sup>**



# Factory and Facilities



- 8,000 sq metre manufacturing facility in UK
- Complete **'In – house'** design, manufacture, fabrication, assembly and testing of all units
- All Units **fully assembled and tested** in factory before dispatch

# Blue Chip Clients



LEADER TO CAPTURE GROWTH



PETER HAMBRO MINING PLC



NORILSK NICKEL



# Current Markets



Telestack have installed  
**600+ customised  
products** on a  
worldwide scale

1. North America and Canada

2. Europe

3. Asia

4. Oceania

5. Africa

6. South America

# Telestack Sales Process



1

Initial concept, design drawings and discussions to meet the specific needs of the customer.

2

Upon detailed feedback from customer, detailed proposal, technical drawings and specifications proposed.

3

Constant liaison with customer in terms of requirements and final proposal reviewed in detail.

4

Customised proposal agreed and technical drawings approved by customer. Order placed for the specific equipment.

5

Throughout design and manufacturing process very strict quality procedures. Units fully built and tested before dispatch.

6

Installation, commissioning and training of operators by Telestack Engineer. Customer service and back-up provided by Telestack representative or Telestack factory.

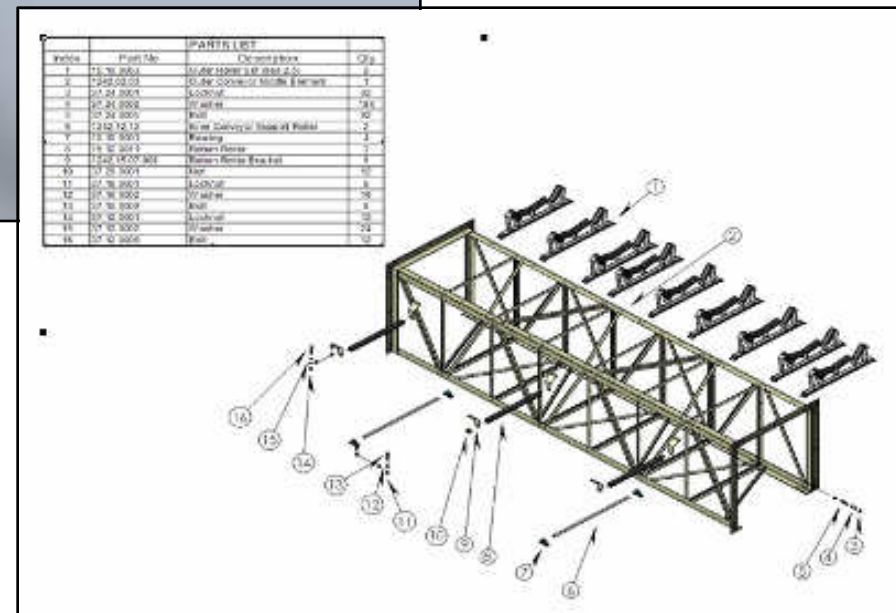
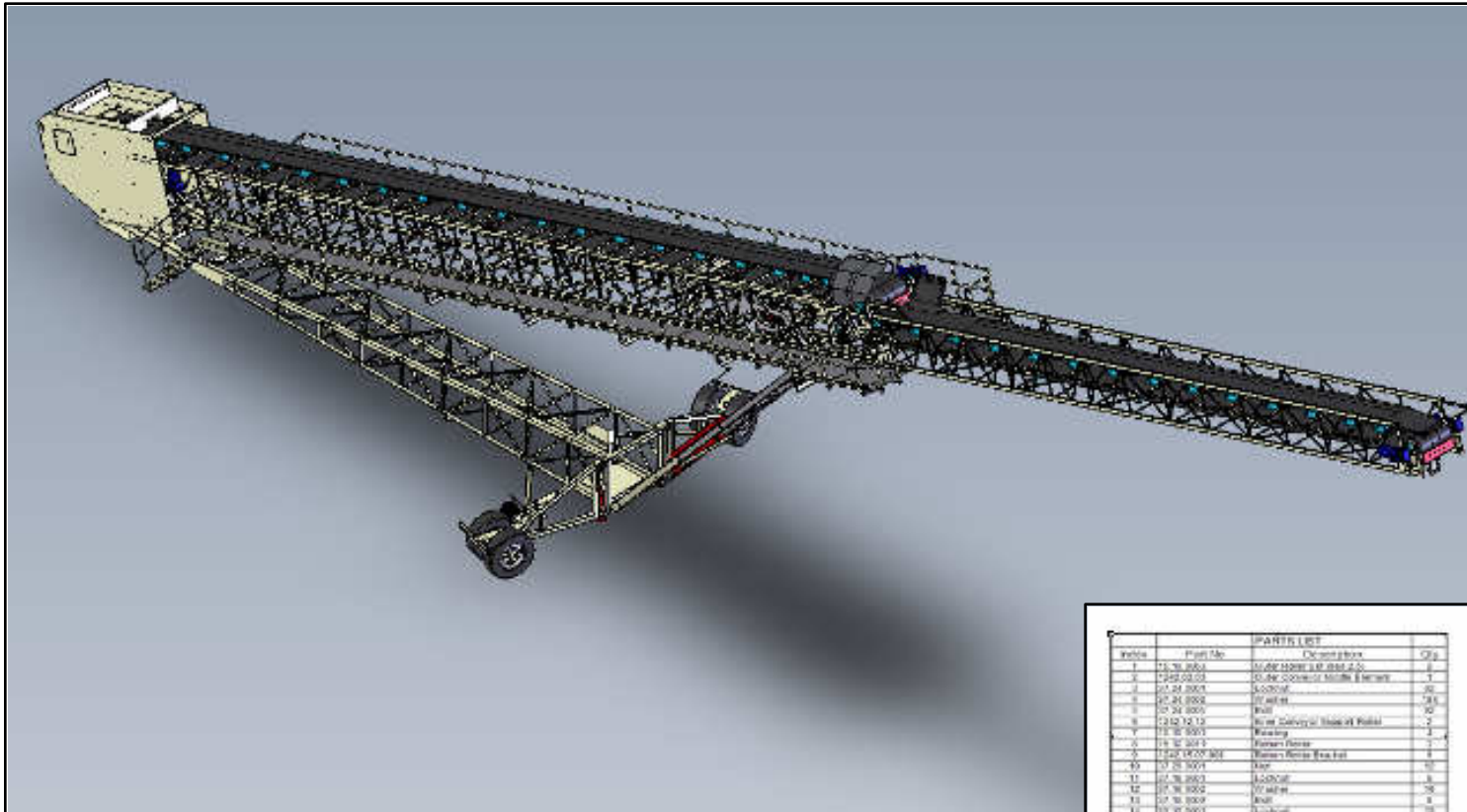
# Handling Range of Bulk Materials



Aggregates, Sand, Gravel, Limestone, Gabbro, Coal, Pet Coke, Salt, Ore's (Iron, Nickel, Gold, Copper), Grain, Fertiliser, Wood-chips, Wood pellets, Sulphur, Bauxite and many more...



# Detailed Conveyor Design



## Solid Works 3D Modelling

- Machines designed / modelled on state of the art 3 D modelling package
- Parts, Operation, Maintenance manuals generated from Solid Works Models

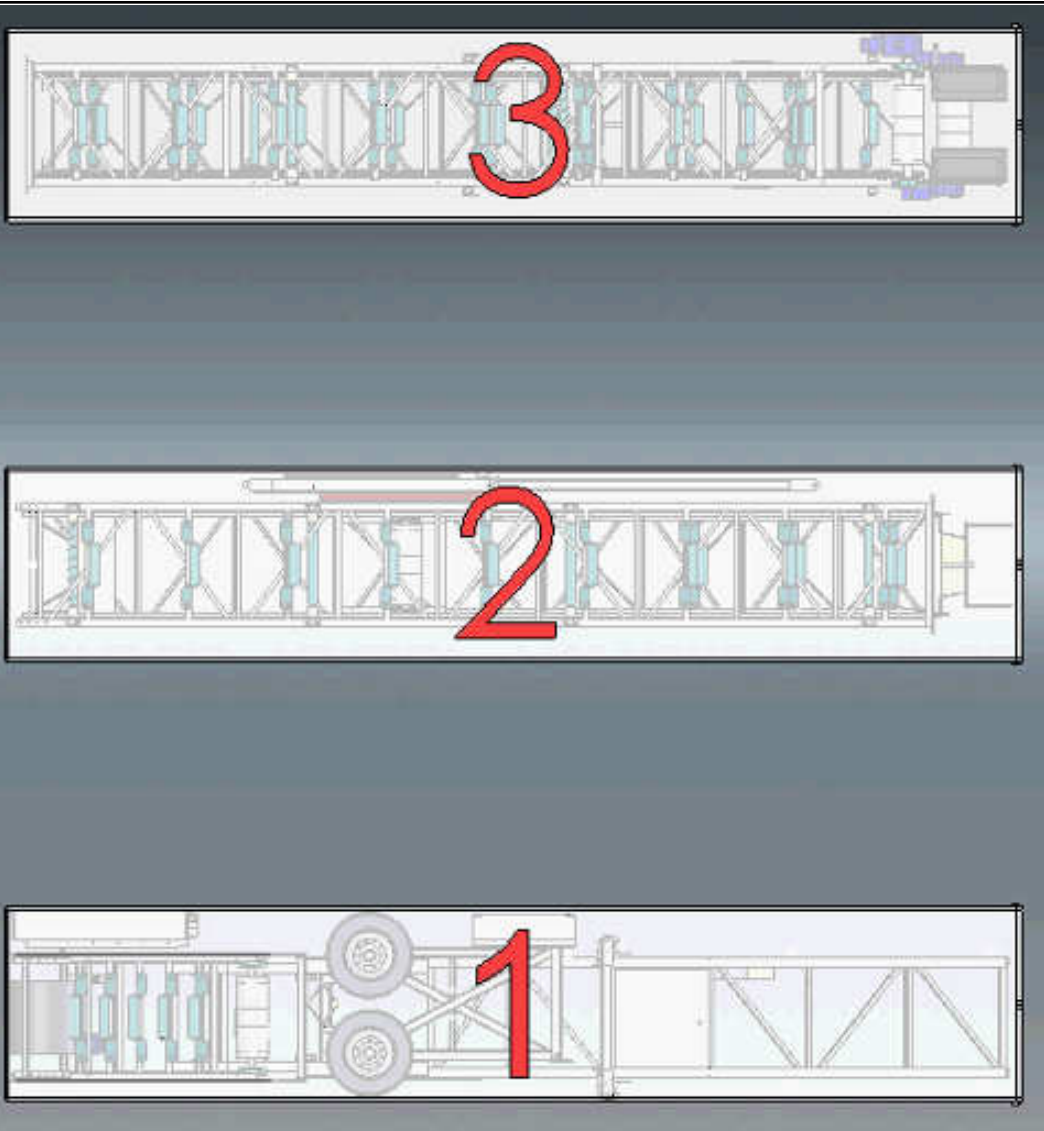
# Assembly and Testing in Factory



- All units **FULLY ASSEMBLED** and **TESTED** in factory before dispatch
- All electrics / hydraulics and operating functions tested and recorded
- Comprehensive **Quality checks** recorded before dispatch

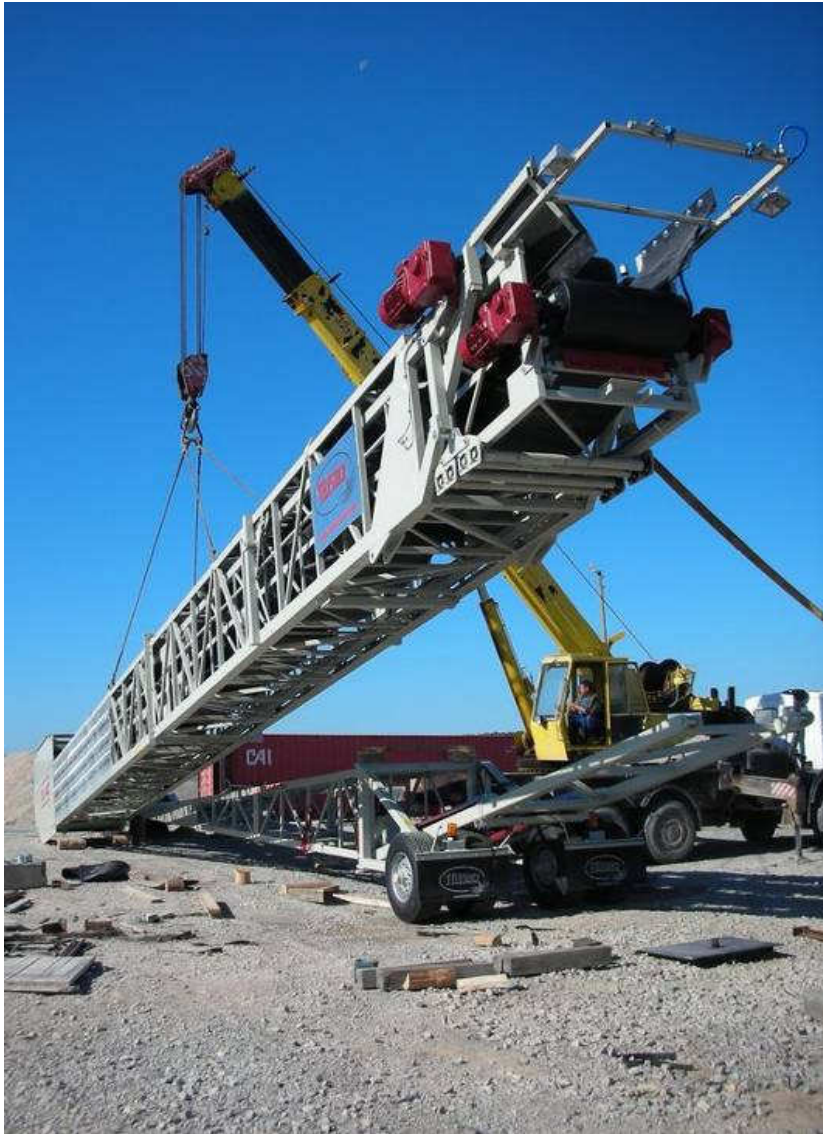


# Shipping Worldwide



- Units packed into **Std 40 ft Containers**
- Cost **effective transport** when shipping globally

# On Site Assembly and Installation



- Typical site assembly less than **One week**
- **Limited Civil construction** needed on site
- No planning permission required

# On Site Assembly and Installation



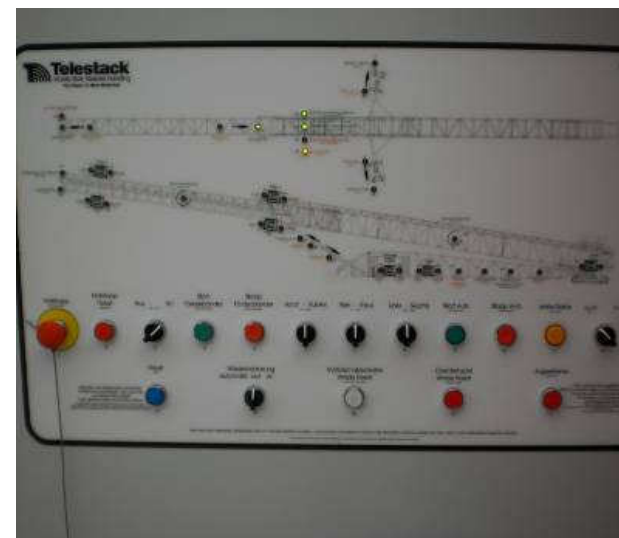
Bolted Sections (No welding)



Plug and Socket Electrics



Integrated Electric Hydraulic Power-pack



Allen Bradley complete diagnostic control panel

# On Site Training and Commissioning



- **On Site Training** for all operators by our installation and commissioning engineer

- **Dry and Wet Commissioning** (With and Without material) of all units on site



**THE  
POWER  
TO MOVE  
MATERIALS™**